

What is Sociology?

It concentrates on:

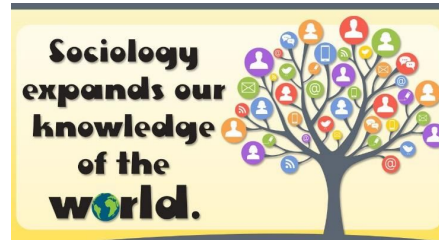
The way society makes us what we are.



What will you learn and how is the course organised?

Within Sociology you will learn about the different organisations and structures that form society and affect human attitudes, actions and opportunities! A lot of Sociological work has led to changes in **law** and new **social policy**.

Sociology aims to question society and answer questions such as, **Why does inequality still exist today?** **Why does your background affect your educational achievement?** **How have roles in the family changed over time?** **Why does poverty still exist and how can it affect someone's life chances?**



Layout of the course & Assessment:

Year 10:

The Sociological Approach
Sociological Research
Families
Education pt1

Year 11:

Education pt2
Crime and Deviance
Social Stratification

You will have **two exams** at the end of Year 11 both **1hour 45minutes**

What can I do with Sociology?

Many students who study GCSE Sociology go on to study A Level Sociology in the sixth form. It will also help with your study of Psychology, Film Studies or Politics.

In addition, Sociology is an extremely valued subject for higher education entry and future careers. Sociology students are particularly in demand for 'people centred occupations' and professions that demand an analytical approach based upon weighing up evidence and arguments to reach considered conclusions.

Hence sociology students have gone on to careers as wide ranging as media research, law, police, journalism, teaching, social and welfare work, personnel work, business analysts, civil service and local government research and policy making, advertising, nursing, medicine and market research.

