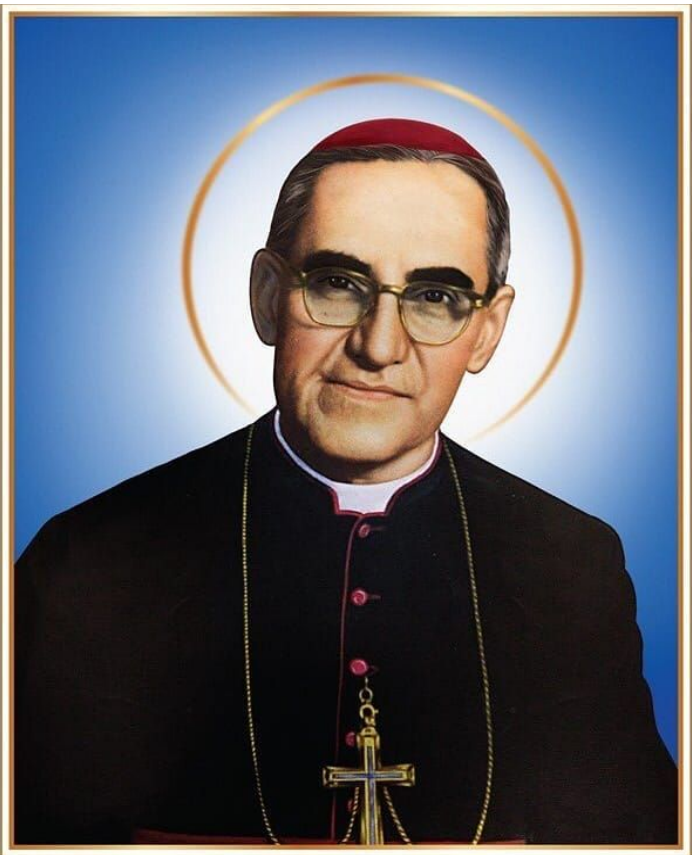








# St. Oscar Romero



Aspire  
not to  
have more  
but to be  
more



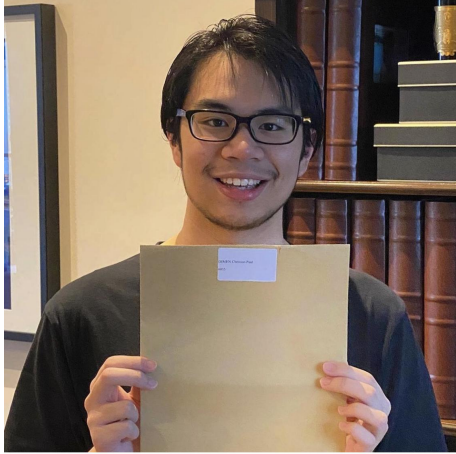
# Why study at Holy Family?

- **Academic Excellence:**

Our dedicated team of experienced teachers provides top-notch instruction and personalised support to help you achieve your academic goals. From A Levels to vocational courses, we offer a wide range of subjects to cater to your interests and aspirations.







Paul achieved **A\*A\*A\*A\*** and is studying Mathematics in UCL



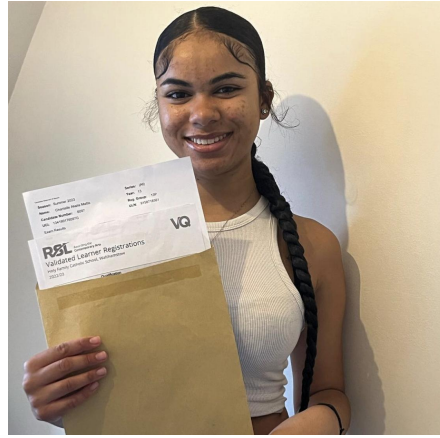
Shanee achieved **A\*A\*A** and is studying History at the University of Cambridge



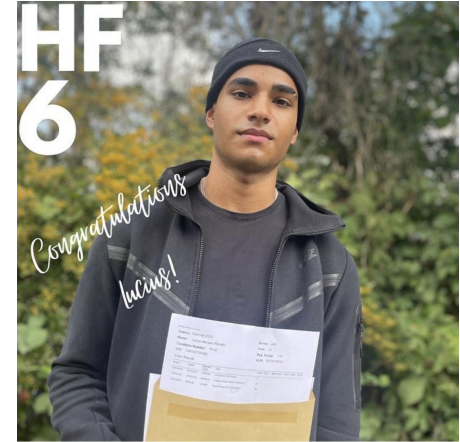
Joshua achieved **AAA** and is studying PPE at the University of Cambridge



Shenyce achieved **A\*AB** and is studying Psychology in University of Warwick



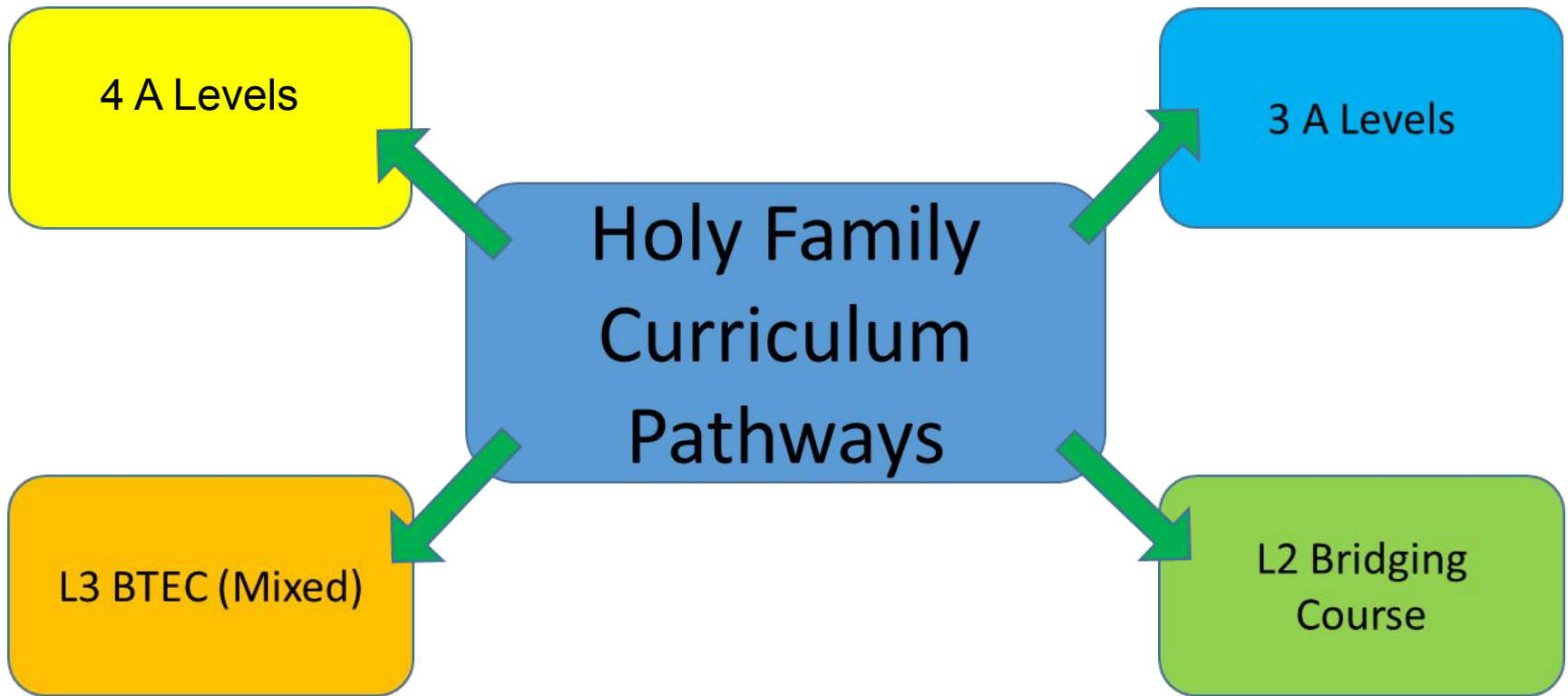
Chantelle achieved **D\*D\*** and is studying Television Production in University of Westminster



Lucius achieved **D\*D\*** and is completing a Gap year before university,



# Curriculum pathways at Holy Family





# Study programmes

Your time in sixth form is not just based on your core subjects...

- Additional supporting qualifications such as Extended Project Qualification (EPQ), Core Maths and community based languages.
- Core Religious Studies programme
- Super-curricular Projects
- Tutorials/PSHCE & Pastoral support
- Future Focus sessions
- Timetabled Supervised Study sessions
- Personal/Social & Community enrichment activities







# Why study at Holy Family?

- **Holistic Education:**

Beyond the classroom, we believe in nurturing well-rounded individuals - **'Be More'**. Our comprehensive enrichment programme, including sports, arts, and community service, ensure that you'll have a balanced and fulfilling school experience.





# Oscar Romero Award

- Our enrichment programme has been designed to embody our core values of **ASPIRE**.
- The **Oscar Romero Award** is a whole school reward programme where students complete activities based on these values.
- Students can use this award as evidence for future universities/employers that they have these values too.

**A**chievement

**S**ervice

**P**articipation

**I**ntegrity

**R**espect

**E**quity



# Examples of our Enrichment Offer...

Duke of Edinburgh (Gold & Silver)

First Aid

Debating

Cooking

Sports Clubs

Social Justice

Yoga

Health and Fitness

Reading Mentors

Learning mentors

Subject ambassadors

Sports coaching

Community Action Day

Marketing and PR

apprenticeships

Senior Prefect Team



# Why study at Holy Family?

- **Supportive Community:**

Join a tight-knit community of students and teachers who care about your success. Our excellent pastoral care system ensures that you receive the guidance and mentorship you need to thrive throughout your time here.







# Support from Staff

- Heads of Year for 12 and 13 and assistant Head of Year
- Dedicated Sixth Form Tutors
- Attendance and admin support
- Specialist Study Supervisor for KS5
- KS5 specific Careers support staff
- KS5 specific SEND support staff
- Mentoring and well being sessions from outside agencies.



# Why study at Holy Family?

- **Future-Ready:**  
HFSIX equips you with essential skills for the future, such as critical thinking, problem-solving, and effective communication through dedicated time focused on careers. We prepare you not only for higher education but also for the rapidly changing job market.





# Next Steps Support...

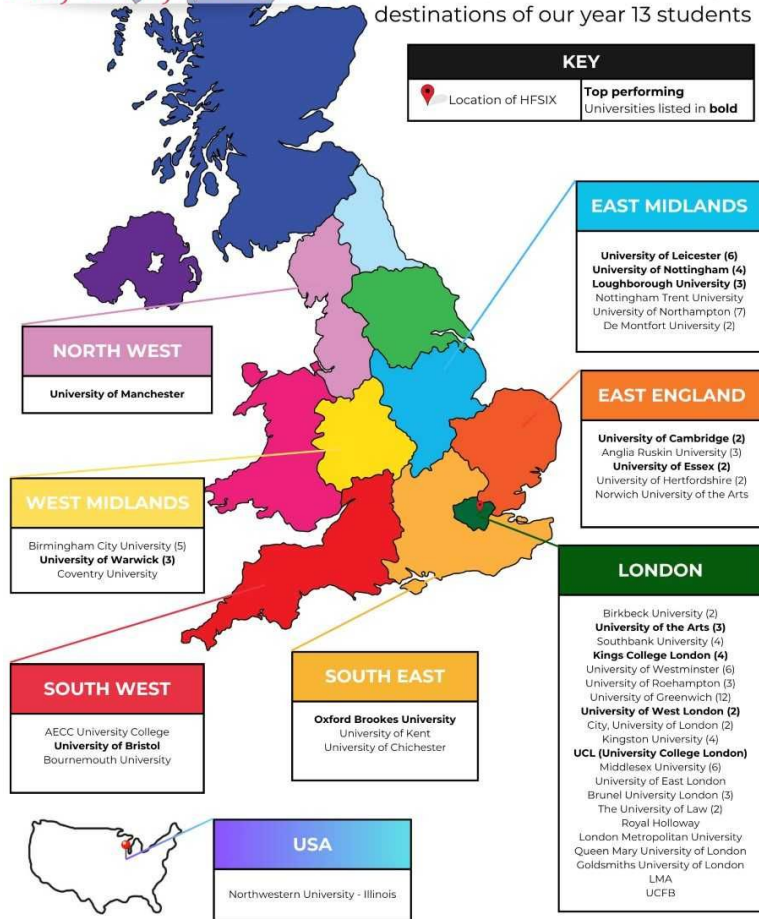
- Future Focus sessions every week
- University Visits
- Work Experience
- Careers interviews
- Parents information evening
- Career talks
- Budgeting and Student Finance advice
- Sutton Trust summer schools
- Sutton Trust USA
- UCAS application workshops
- Personal statement workshops
- CV writing support
- Interview Practice with Professionals
- Apprenticeship talks
- Mock university interviews
- UCAS Fair

# HFSIX

Holy Family Sixth Form

## Class of 2023 Destinations Map

This map shows the university destinations of our year 13 students







# Why study at Holy Family?

- **Sixth Form Facilities:**  
Our sixth formers enjoy well-equipped classrooms, libraries, labs, and technology resources, ensuring you have the tools you need to excel.





# Application process

All applications are online - please follow the links on the school website to sixth form - admissions

Current Holy Family students will be emailed log-in details

**External candidates start here**

The Holy Family Catholic School and Sixth Form

**NEW APPLICATION**

Use the button below to start a new application. You don't have to finish your application immediately. You can save it and continue later.

[Start New Application](#)

**Registered Users**

Username or Email address

Password

[Login](#)

[Forgot your password?](#)  
[Trouble logging in?](#)

**Current Holy Family students log-in here**



# Option Blocks

- These form the basis for creating the timetable for September 2023
- Students applying for **A Levels** should choose a minimum of 3 subjects and should choose one option from each block (A,B,C,D) only.
- Students with a GCSE average score of 6.5 or above have the option of starting on 4 A Levels. This will be discussed at interview and enrolment.
- Students applying for **Level 3 BTEC** subjects should choose one subject from BTEC Block A and one subject from BTEC Block B.
- Those choosing **BTEC Health and Social Care** should choose this subject only as it is a 'triple award' counting as three A Levels



## A Level Pathway Blocks

Block A	Block B	Block C	Block D	Block E
Art	Drama	Biology	Business Studies	GCSE Maths
Biology	French	Chemistry	English Lit	EPQ
Geography	Politics	D&T (Product Design)	Maths	Core Maths
History	Maths	Economics	Physics	Further Maths
Photography	Philosophy & Ethics	Film Studies	Psychology	
Psychology	Sociology	Sociology	Spanish	
Computing				
Further Maths				





## Level 3 BTEC Pathway Blocks

<b>BTEC Block A (Double/triple awards)</b>	<b>BTEC Block B (Single awards)</b>	<b>Additional</b>
BTEC Business (double)	BTEC IT (single)	GCSE Maths
BTEC Health & Social Care (triple)*	BTEC Sport (single)	Functional Skills Maths
BTEC Media Production (1.5)		

***NB: BTEC Health and Social Care is a Triple award so should be the only subject chosen***



# Academic Requirements

- **A Level:** GCSE average of 4.8+, **Grade 5+ in English Language** for all A Levels. **Maths 5+ for many A Levels.**
- **Level 3 BTEC:** GCSE average of 3.6+, Grade 4+ in English Language. Maths GCSE 4+ for many BTECS.
- Many subjects have **specific** entry requirements e.g. Biology 7-7 in science



# Interviews and offers

All applicants will receive an interview – this is not something to be worried about BUT please ensure you come ready to discuss why you are applying for your chosen subjects.

Any offer that is made takes into consideration:

- Your Practice/Mock exam results
- Your current teacher predictions
- Your attendance and punctuality
- Teacher reference

There are two levels of offer:

- 2) Firm conditional (a firm offer based on meeting the specific entry requirements for subjects).
- 3) Pending conditional (Where there are concerns over any of the above points)



# FAQs

- Why are there strict entry requirements for subjects?
- Why are Maths and English so important?
- What are the best subject combinations?
- Why are the option blocks designed this way?
- Can Level 3 BTEC get me to university?
- What if I really have no clue what to pick?



## Help and guidance

Speak to subject specialists

Speak to current students

Contact the sixth form team

SEND and Careers at the rear of the hall tonight

[www.ucas.com](http://www.ucas.com)

- University entry requirements (Grades and Post-16 options)
- Information on Apprenticeships

Informed choices website



**RUSSELL  
GROUP**



**Informed  
Choices**

A Russell Group guide  
to making decisions  
about post-16 education

[www.informedchoices.ac.uk](http://www.informedchoices.ac.uk)





# Sixth Form application timeline

**Friday 10th November:** Online applications open

**Mid December:** Taster Day options questionnaire

**Wednesday 17th January:** Sixth Form /college taster day

**Friday 27th January:** Student Fair

**Friday 2nd February:** **Deadline for Applications**

**Wednesday 6th March:** Interviews for External Students

**w/b 11th March:** Interviews

**Thurs 22nd August:** GCSE results day/enrolment begins



# What next this evening

Optional tours

Ask lots of questions - make informed decisions

Subject information flyers

Please feel free to contact us with any questions

[f.wilbraham@holyfamily.waltham.sch.uk](mailto:f.wilbraham@holyfamily.waltham.sch.uk)

We hope you find the evening useful!



# ***Unlock your potential and shape your future with an exceptional education at Holy Family Sixth Form***

*“Subject leaders ensure that the curriculum builds on pupils’ prior learning. In the Sixth Form, students read widely and often. Teachers use their subject expertise to check pupils’ understanding. Sixth Form students attend dedicated study skills sessions.” OFSTED 2023*

